



Mast 1, 2, 3 and Track Systems



Mast Screen System



Fin System



TZ Low Voltage Lighting System



Glass Cabinet Components



SignKit Signage Systems

SHOPKIT DESIGNS LIMITED and SHOPKIT EXPORT LIMITED

100 Cecil Street · North Watford · Hertfordshire WD24 5AD · England

Tel: +44 (0)1923 818282 **Fax:** +44 (0)1923 818280 **email:** sales@shopkit.com **web:** www.shopkit.com



SHOPKIT GmbH

Oststr. 36 · 40211 Düsseldorf · Germany

Tel: +49 (0)211 3869 60 **Fax:** +49 (0)211 3869 624 **email:** info@shopkit.de **web:** www.shopkit.de

B&N INDUSTRIES

1050 Bing Street · San Carlos · California 94070 · U.S.A.

Tel: 001 650 593 4127 **Fax:** 001 650 593 3112 **web:** www.bnind.com

DAVIES GROUP

Showroom No.4 · Ground Floor · Garhoud Atrium Building · Garhoud · Dubai · UAE

Tel: +971 4 2828528 **Fax:** +971 4 2828328 **email:** info@daviesgroupuae.com

LOGOGRAFICA INDUSTRIAL, LDA

Rua Portugal – Lote 73-A · Vale do Forno · 2675-248 Odivelas · Portugal

Tel: +35121 931 2061 **Fax:** +35121 931 2045 **email:** info@logografica.pt **web:** www.logografica.pt

SHOPKIT

DESIGNS LIMITED

www.shopkit.com



CABLE + ROD

COMPONENTS

EDITION

7


SHOPKIT

Shopkit offers the most comprehensive range of display equipment, low-voltage lighting and suspension systems available today.

Shopkit is experienced in all types of interior environments and window displays for shops, offices, banks, restaurants and exhibitions.

Shopkit Designs can offer clients a complete design and build service. Starting with the initial concept/planning stages, through manufacture and fabrication and then to complete installation.

Shopkit is continuing to expand worldwide and now has offices in the USA, Europe, the Middle East and Far East countries, with products produced locally as well as at the factory in the United Kingdom.

Shopkit invites all its customers to visit our showroom to see the full range of systems available. Purchasing can be made directly from our trade counter or by phone, using all recognised credit cards. 

contents

- 1 Contents
- 2 Cable +Rod
- 4 Cable, Mini+Maxi
- 5 Rod 6mm+12mm
- 6 Fashion
- 8 Retail
- 10 Residential+Simply Furniture
- 12 Commercial
- 14 1.5mm Mini Cable Introduction
- 16 Mini Cable Components
- 19 Mini Track
- 20 3mm Maxi Cable Introduction
- 22 Maxi Cable Components
- 25 Maxi Track
- 26 6+12mm Rod Introduction
- 28 6+12mm Rod Components
- 30 Accessories
- 32 Balustrades
- 33 Banners + Signage
- 34 Fabrication+Manufacturing
- 35 Panel Fixings
- 36 Lighting
- 40 Setups

cable + rod



cable mini+maxi



Shopkit will design and manufacture any specialised component for the Cable systems.



The following pages illustrate the components available for use with 1.5mm Cable (Mini) and 3mm Cable (Maxi). Cable systems are immensely strong; when correctly fixed, Mini has been tested to 140kg and Maxi to 200kg. The Shopkit range of components is available in anodised aluminium as standard but is also available in brass, stainless steel and chromed brass, with epoxy powder colours to customers' specification.

Cables can be fitted to suit all site requirements – for example, wall to wall, floor to ceiling and wall to ceiling. In addition a full range of merchandising equipment to compliment the system is available. Shopkit also offers a standard frame system within which Cable can be tensioned. Special frames can be individually designed and manufactured to meet specific requirements.



rod 6^{mm} + 12^{mm}



The Rod system is available in either 6mm or 12mm diameter Rod.

Rods are manufactured in 1 metre and 0.5 metre lengths and simply screw one into another, to make up required lengths, with the excess being cut off at the base. There is a range of clamp on components to take shelves and graphic panels etc. While very strong, this system, is not suited for hanging rails or front appraisal arms for clothing.

This product allows for full adjustability of all components and can be fixed ceiling to floor, for shelving, or wall fixed for signage/graphics etc. Interesting grids can be constructed to make multi-panel displays.



All components are manufactured from satin anodised aluminium as standard.

We can also manufacture these components in stainless steel or brass, with a range of finishes including, chrome, black anodised and epoxy powder coating. Prices on request.

Next day delivery for ex-stock items, 15 working days for specials.



fashion



The Shopkit range of products allows for unlimited solutions to fashion's ever demanding display requirements. Choose from the 'basic' range of components in this brochure and combine them with the range of products from the **Mast** or **Fin** range, each with their own brochure. These have been designed to optimise the display of clothing while giving complete flexibility with contemporary style.

Shopkit supply a wide range of accessories from shelving to display mannequins and while the standard range is extensive, special solutions to individual display requirements are a Shopkit speciality.



Shelving on Cable



Single Rig Mast



Twin Rig Mast



Full length mirror



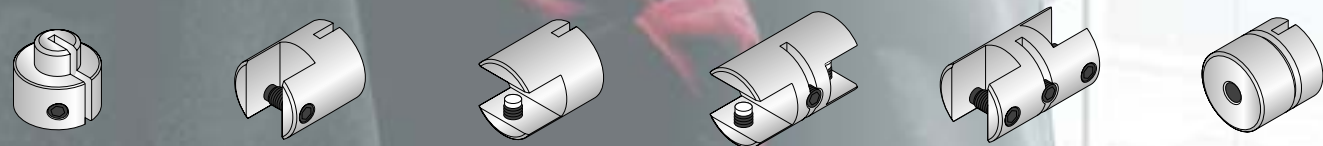
Slatted aluminium shelving



Single shelf support



Mast mannequin



retail

From glassware to cars, Shopkit's range of products offer the most contemporary solution to any retail display requirement.



TZ low-voltage lighting



Rod and slat signage system



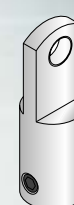
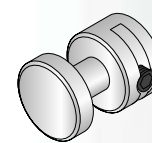
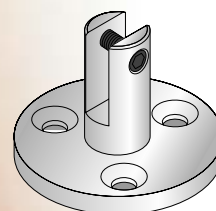
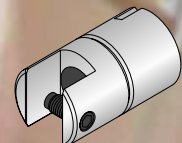
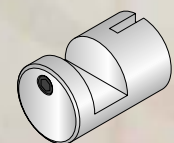
Product display cabinets



12mm Rod



12mm Rod



Picture rail hook-on tensioner

residential

For a contemporary solution to shelving in a variety of ways, choose from the range of **Mini** and **Maxi Cable** components in this brochure or refer to Shopkits other brochures featuring the **Mast**, **Fin** and **Rod Line** systems.



Fin display system

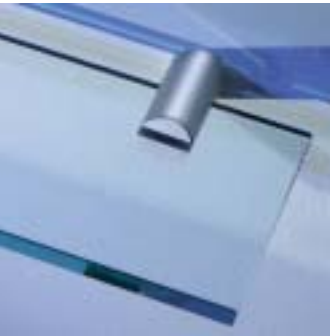


Handles and feet

Simply Furniture is an exciting new range of fittings and accessories, suitable for domestic, office and commercial use. Sleek design is combined with superb metal finishes – items available in silver satin anodised aluminium.



Towel hooks



Shelf brackets

A variety of shelving solutions



Included within the range are door knobs and handles, coat hooks and a variety of shelving for kitchen and bathroom. Also available are table legs for glass or wooden tables, curtain on cable and a variety of bathroom accessories.



Toilet-roll holders

Simply
FURNITURE

A separate brochure is available on request.

commercial



SignKit



12mm Rod Shelves



Mast Screen

Using a combination of Shopkit's Cable components, **Mast** system and **TZ** Lighting range, systemized solutions to design problems can be achieved with unique results.

Additionally Shopkit can design and manufacture bespoke solutions to a design brief.



TZ.18 Disc Pendant Multipoise



SignKit



TZ.2 Cross Bar Multipoise



Mobile display units

Glass panel support



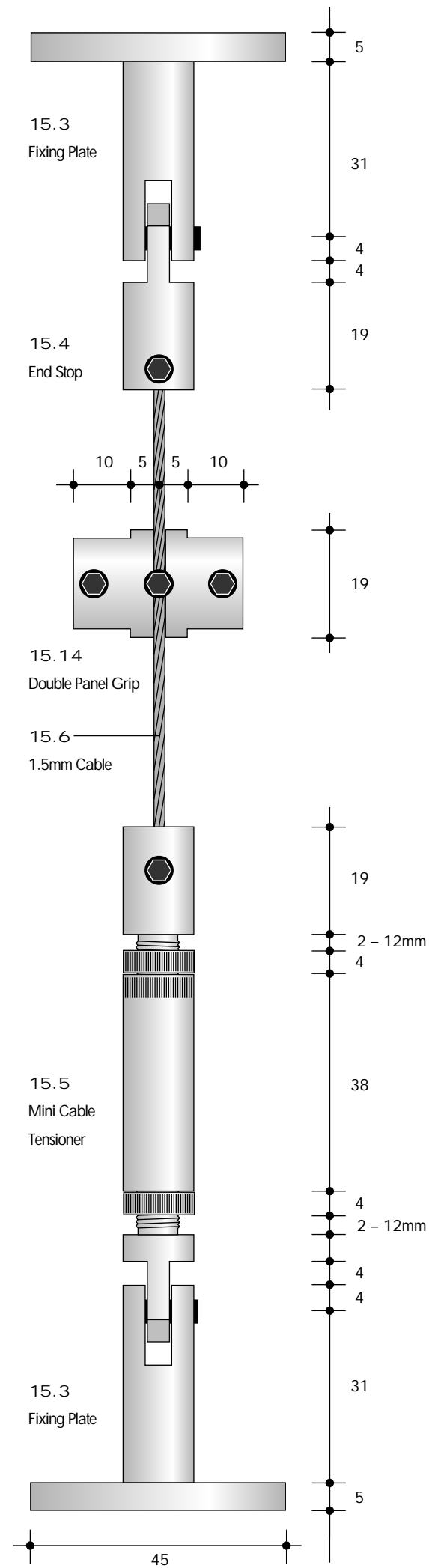
1.5^{mm} mini cable

The following pages illustrate the components available for use with 1.5mm Cable (Mini). Cable systems are immensely strong; when correctly fixed, Mini has been tested to 140kg. (All 5mm Hex grub screws with torque each of 3.5NM).

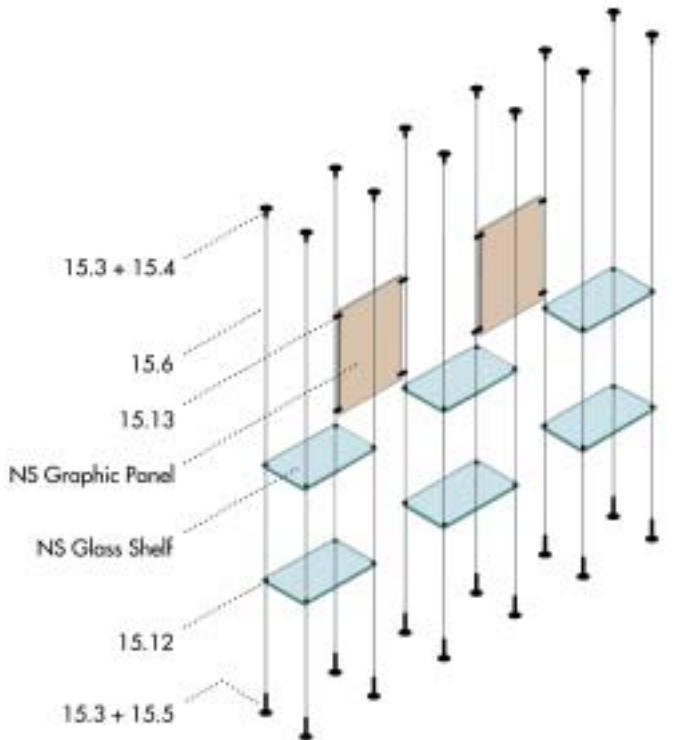
The Shopkit range of components is available in anodised aluminium as standard but is also available in brass, stainless steel and chromed brass, with epoxy powder colours to customers' specification.

Cables can be fitted to suit all site requirements – for example, wall to wall, floor to ceiling and wall to ceiling (see page 40 for setup examples).

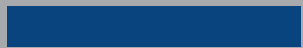
Shopkit will design and manufacture any specialised component for the Cable systems.



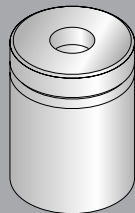
CC Steel Cable Cutters



CABLE

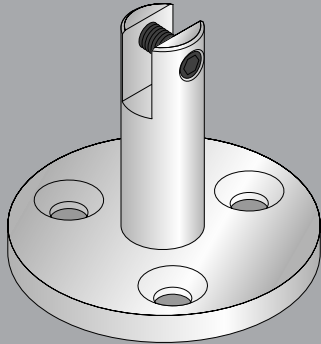


mm



15.1

Economini end stop. Secure ceiling fixing in place. The cable is passed through cover cap and end stop secured to cable by single grub screw. Thread cover cap onto ceiling fixing plate to secure.



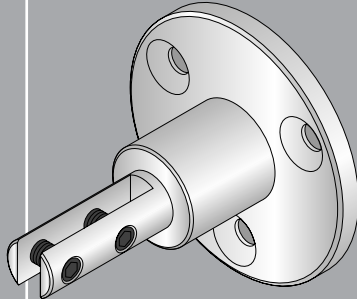
15.3

Fixing plate. 45mm diameter for fixing to ceiling, floor or wall. When fixed to wall cables run vertically and provide a wall fixed display system.



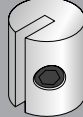
15.5

Tensioner for cable. Secured to the cable by tightening two opposing grub screws onto the cable. This tensioner can be used in conjunction with items 15.3 and 15.8.



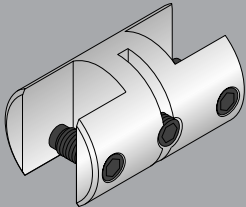
15.8

Bottom wall fixing. To be used in conjunction with items 15.4, 15.5, 15.9 and 15.10.



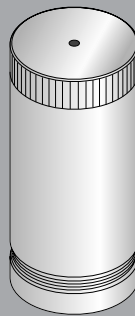
15.11

General purpose support (removable). For rails, shelves etc.



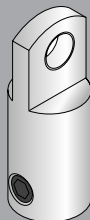
15.14

Double sided removable picture/panel grip. Holds pictures or panels up to 10mm.



15.2

Tensioner and bottom fixing. Secure floor fixing plate in place. The cable is passed through tensioner cover cap and end stop secured to cable by single grub screw. Thread tensioner cover cap onto floor fixing plate and tighten until cable is taut.



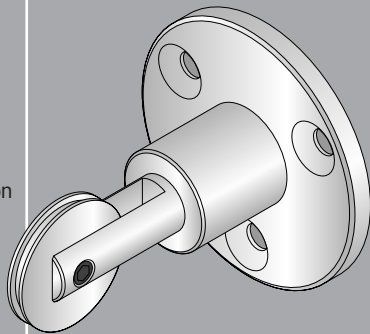
15.4

End stop for cable. Can be used to secure the cable to items 15.3 or 15.8. The cable is pushed into one end of this component and secured by tightening two grub screws.



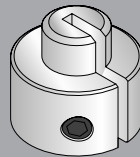
15.6

1.5mm stainless steel cable. Available by the metre and can be cut to virtually any length.



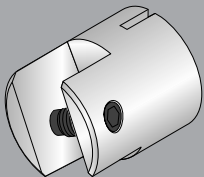
15.9

Pulley wheel on fixing plate. This item enables cable to be tensioned from a wall or ceiling and support anything from just shelves to our complete shopfitting system. Use in conjunction with 15.8 and 15.10 (or 15.16 when ceiling fixed)



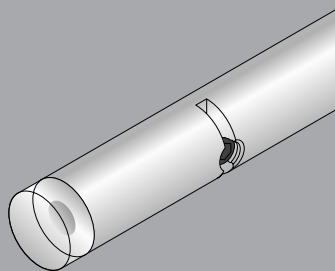
15.12

Glass and steel shelf support (removable). Shelf requires drilling with 12mm holes.



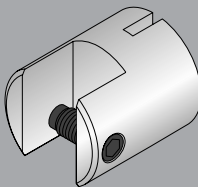
15.15

20° angle grip. Used for holding angled literature dispensers. (Literature dispensers made to individual requirements ie number of pockets and sizes etc).



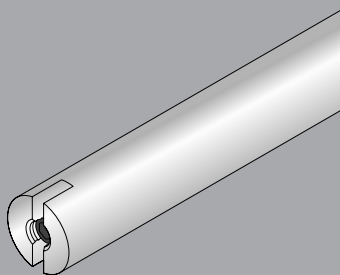
15.10

Spacer rod. This is used in conjunction with item 15.9 and 15.8 when it is a wall fixed system. It spaces the first cable 30mm from the wall and keeps the two drops of cable 200mm apart. A pair is required for one side of every assembly.



15.13

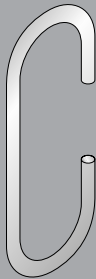
Single sided removable picture/panel grip. Holds pictures or panels up to 10mm.



15.16

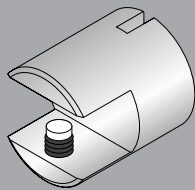
Spacer bar. For cables using item 15.9 that are supported from the ceiling. Keeps the cables spaced at 200mm in order to accept shelving. Specials made to order.

MINI
1.5mm CABLE



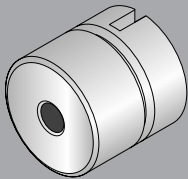
15.17

Double ended hook. For use with tensioner item 15.5 or end stop item 15.4.



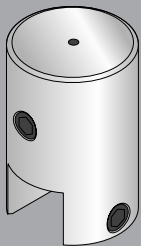
15.18

Single sided glass shelf support grip (will hold shelves up to 10mm).



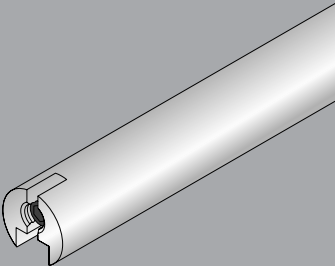
15.19

Single sided timber panel or shelf support grip.



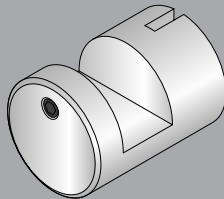
15.20

Top edge grip. For suspending panel from end of cable (holds panels up to 10mm thick).



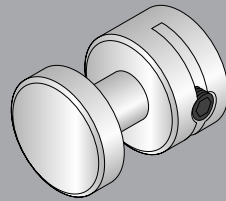
15.21

Continuous channel. To be used at the top and bottom, for supporting glass or solid panels (up to 12mm thick). Available in 400, 800 and 1200mm lengths.



15.22

Picture hook.



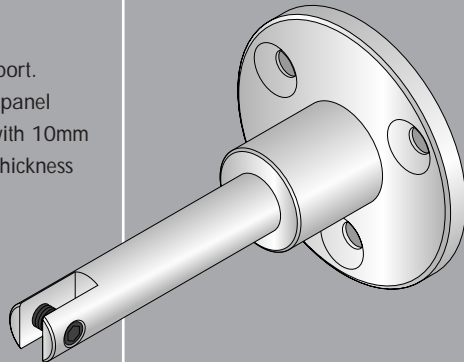
15.23

Glass or solid panel support. Showing disc on face of panel (panel requires drilling with 10mm holes). Special sizes for thickness must be stated.



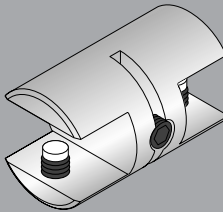
15.24

Tensioner. Accepts cables from both ends.



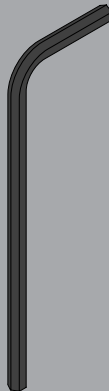
15.25

Fixing plate with extended arm (75mm overall from wall). Can be used and fixed as item 15.3.



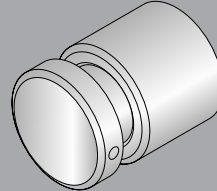
15.26

Double sided glass shelf support grip (will hold shelves up to 10mm).



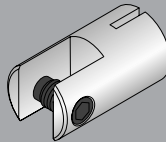
15.K

Allen key. For all cable fixing grub screws on mini system.



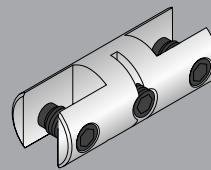
15.27

Wall fixed panel support. (Disc diameter 19mm) will hold pictures or panels up to 10mm. Requires 13mm hole drilling in panel.



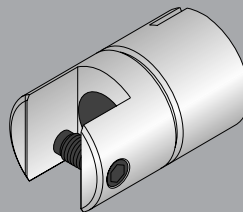
15.28

Single 6mm Panel grip.



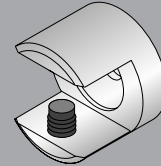
15.29

Double 6mm Panel grip.



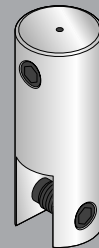
15.30

Swivel grip. Multi-directional clamp for panels and shelves up to 10mm thick.



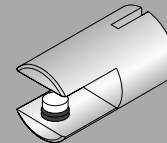
15.31

Wall fixed shelf grip. For up to 10mm.



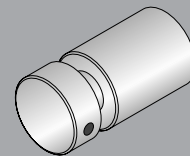
15.33

Top edge grip. For suspending panels from end of cable (holds panels up to 6mm thick).



15.34

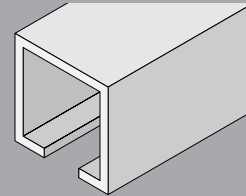
Single sided removable glass shelf support grip (will hold shelves up to 6mm)



15.35

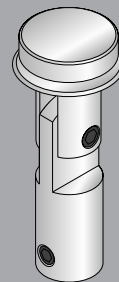
Wall fixed micro panel support. (Disc diameter 12mm) will hold pictures or panels up to 6mm. Requires 9mm hole drilling in panel.

MINI
1.5mm CABLE



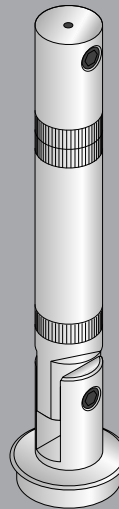
T15.1

Wall, ceiling or floor fixed track. Into which mini 1.5mm assemblies can be fixed. Price per 1000mm modules.



T15.2

Mini (1.5mm) end stop and top fixing set to fit track T15.1.



T15.3

Mini (1.5mm) tensioner and bottom fixing set to fit track T15.1.

3^{mm} maxi cable

The following pages illustrate the components available for use with 3mm Cable (Maxi). Cable systems are immensely strong; when correctly fixed, Maxi has been tested to 200kg. (All 5mm Hex grub screws with torque each of 3.5NM).

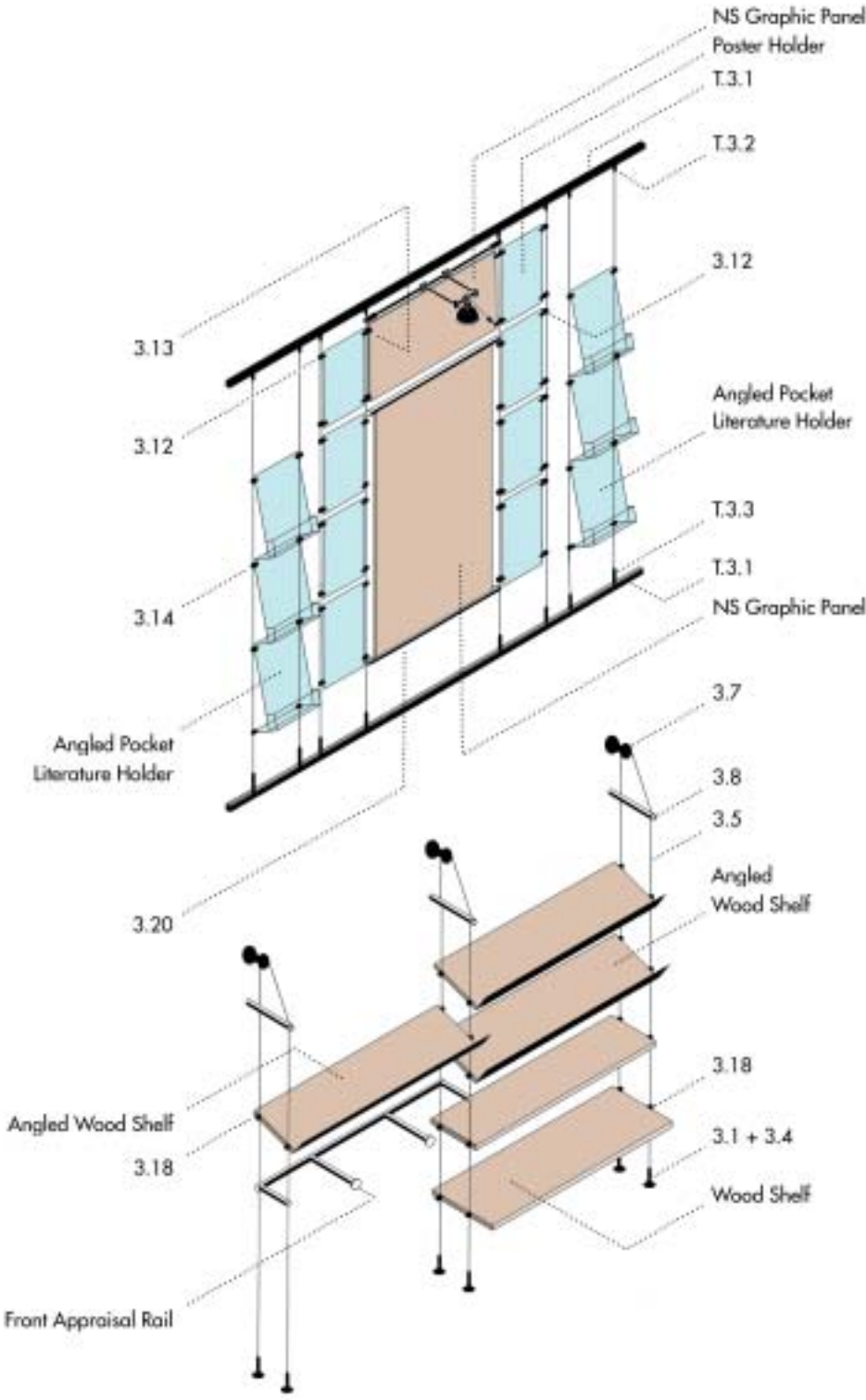
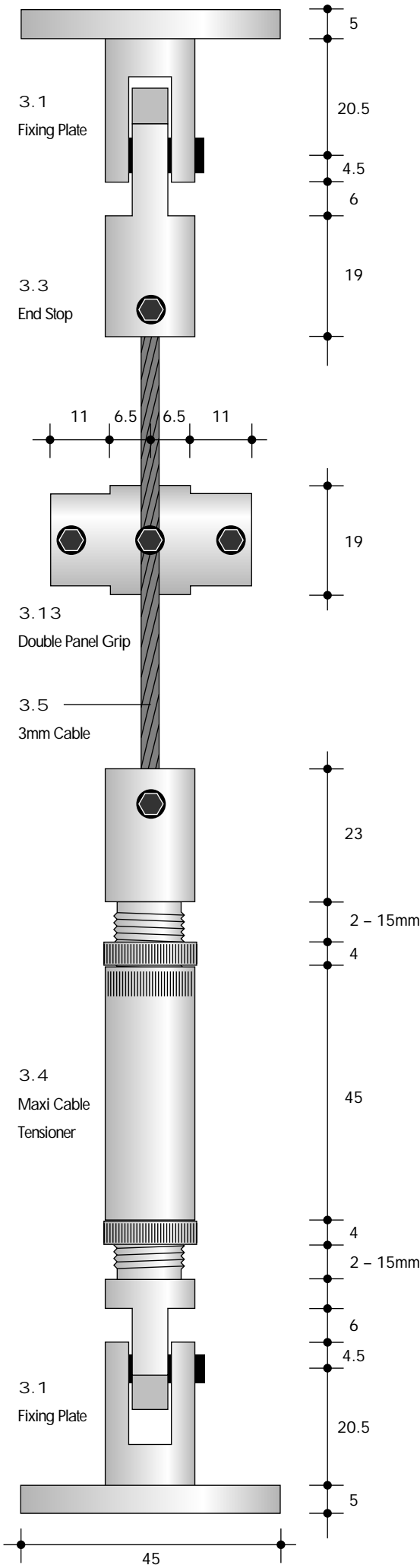
The Shopkit range of components is available in anodised aluminium as standard but is also available in brass, stainless steel and chromed brass, with epoxy powder colours to customers' specification.

Cables can be fitted to suit all site requirements – for example, wall to wall, floor to ceiling and wall to ceiling (see page 40 for setup examples).

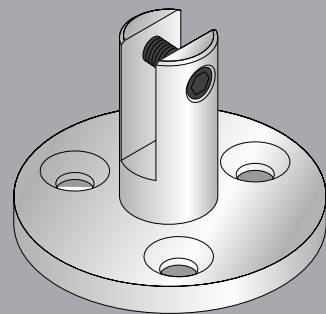
Please note: When using low voltage lighting, only Maxi Cable components, isolated tensioners (L7) and isolated end stops (L4) are to be used for fixing shelves and panels to 3mm lighting cable (L1 200).

Shopkit will design and manufacture any specialised component for the Cable systems.

CC Steel Cable Cutters

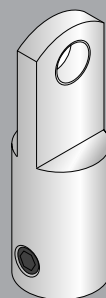


CABLE MAX 30mm



3.1

Fixing plate. 45mm diameter for fixing to ceiling, floor or wall. When fixed to wall cables run vertically and provide a wall fixed display system.



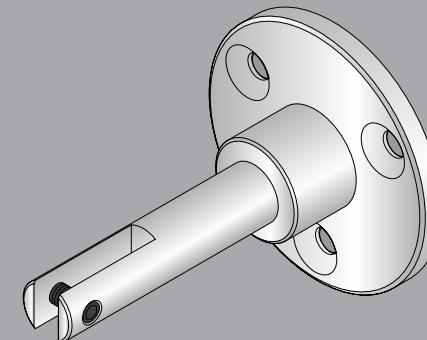
3.3

End stop for cable. Can be used to secure the cable to items 3.1, 3.2 and 3.21. The cable is pushed into one end of this component and secured by tightening two grub screws.



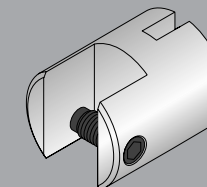
3.5

3mm stainless steel cable. Available by the metre, which can be cut to virtually any length.



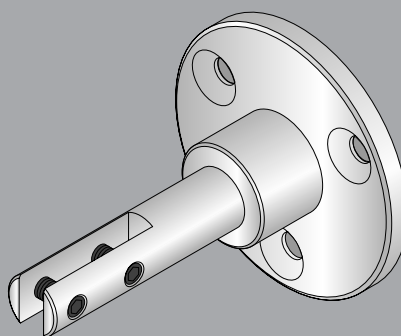
3.9

Fixing plate with extended arm (75mm overall from wall). Can be used and fixed as item 3.1.



3.12

Single sided removable picture/panel grip. Will hold pictures or panels up to 10mm.



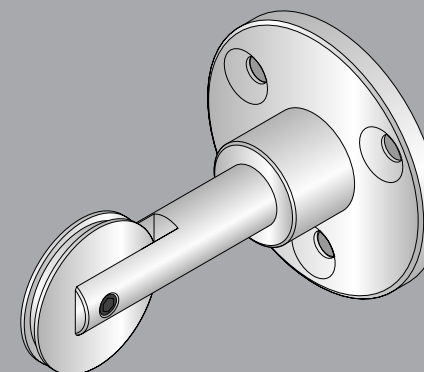
3.2

Bottom wall fixing. To be used in conjunction with items 3.7 and 3.8.



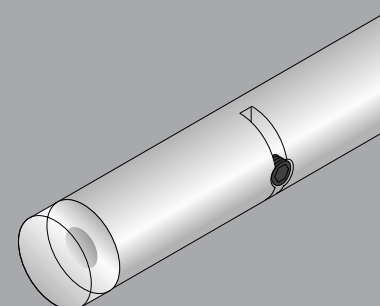
3.4

Tensioner for cable. Secured to the cable by tightening two opposing grub screws onto the cable. This tensioner can be used in conjunction with items 3.1, 3.2 and 3.21.



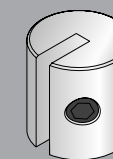
3.7

Pulley wheel on fixing plate. This item enables cable to be tensioned from a wall or ceiling and support anything from just shelves to our complete shopfitting system.



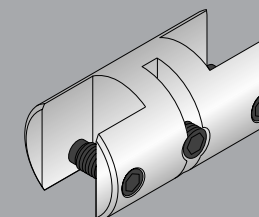
3.8

Spacer rod. This is used in conjunction with items 3.7 and 3.9 when it is a wall fixed system. It spaces the first cable 52mm from the wall and keeps the two drops of cable 200mm apart. A pair is required for one side of every assembly.



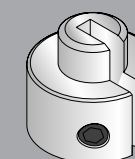
3.10

General purpose support (removable). For rails and shelves etc.



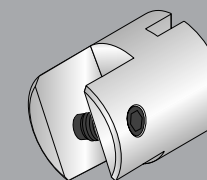
3.13

Double sided removable picture/panel grip. Will hold pictures or panels up to 10mm.



3.11

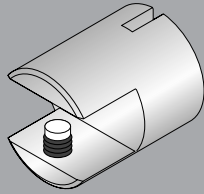
Glass and steel shelf supports (removable). Shelf requires drilling with 12mm holes.



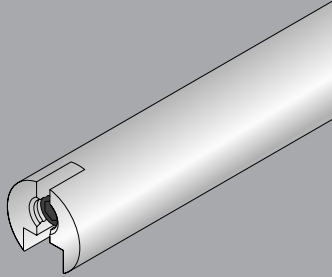
3.14

20° angle grip. Used for holding angled literature dispensers. (Literature dispensers made to individual requirements – number of pockets & sizes etc.).

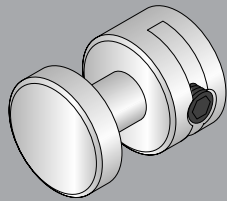
MAXI
3 . 0 m m C A B L E



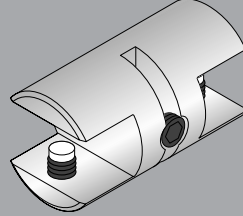
3.17
Single sided glass shelf support grip. Will hold shelves up to 10mm.



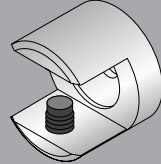
3.20
Continuous channel. To be used at the top and bottom, for supporting glass or solid panels (up to 12mm thick). Available in 400, 800 and 1200mm lengths.



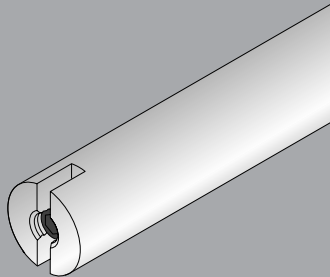
3.23
Glass or solid panel support. Showing disc on face of panel (panel requires drilling with 10mm holes). Special sizes for thickness must be stated.



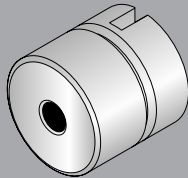
3.25
Double sided glass shelf support grip (will hold shelves up to 10mm).



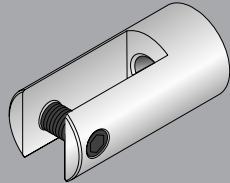
3.28
Wall fixed shelf grip. For up to 10mm.



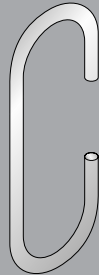
3.15
Spacer bar. For cables when using item 3.7 and they are supported from the ceiling. Keeps the cables spaced at 200mm.



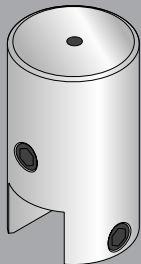
3.18
Single sided timber panel or shelf support grip.



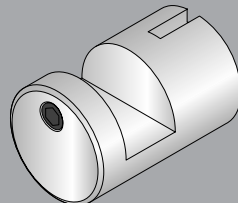
3.21
End fixing. To attach end stop 3.3 and cable tensioner 3.4 to vertical posts when using cable as staircase balustrading. Specifier to ensure M5 studs are welded to posts.



3.16
Double ended hook. For use with tensioner 3.4 or end stop 3.3.



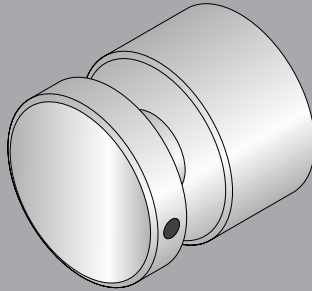
3.19
Top edge grip. For suspending panel from end of cable (holds panels up to 10mm thick).



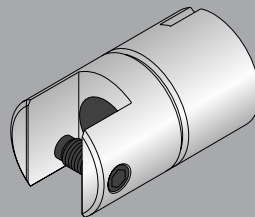
3.22
Picture hook.



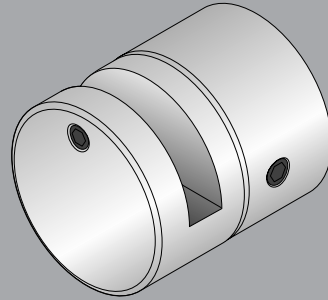
3.24
Tensioner. Accepts cables from both ends.



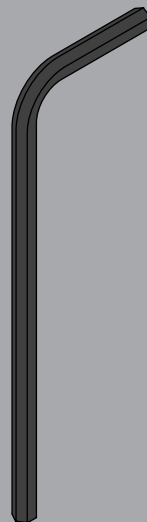
3.26
Wall fixed panel support. (Disc diameter 30mm) will hold pictures or panels up to 10mm. Requires 13mm hole drilling in panel.



3.27
Swivel grip. Multi-directional clamp for panels and shelves up to 10mm thick.

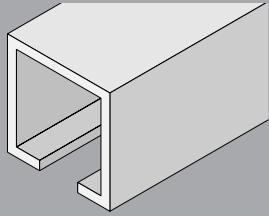


3.29
Wall fixed panel support. (Disc diameter 30mm) will hold pictures or panels up to 6mm. (No drilling of panel required).

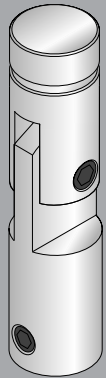


3.K
Allen key. For all cable fixing grub screws on maxi system.

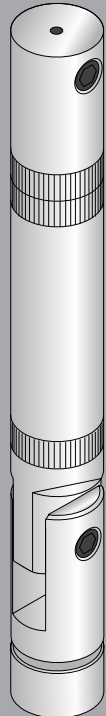
MAXI
3 . 0 m m C A B L E



T3.1
Wall, ceiling or floor fixed track. Into which maxi 3mm assemblies can be fixed. Price per 1000mm modules.



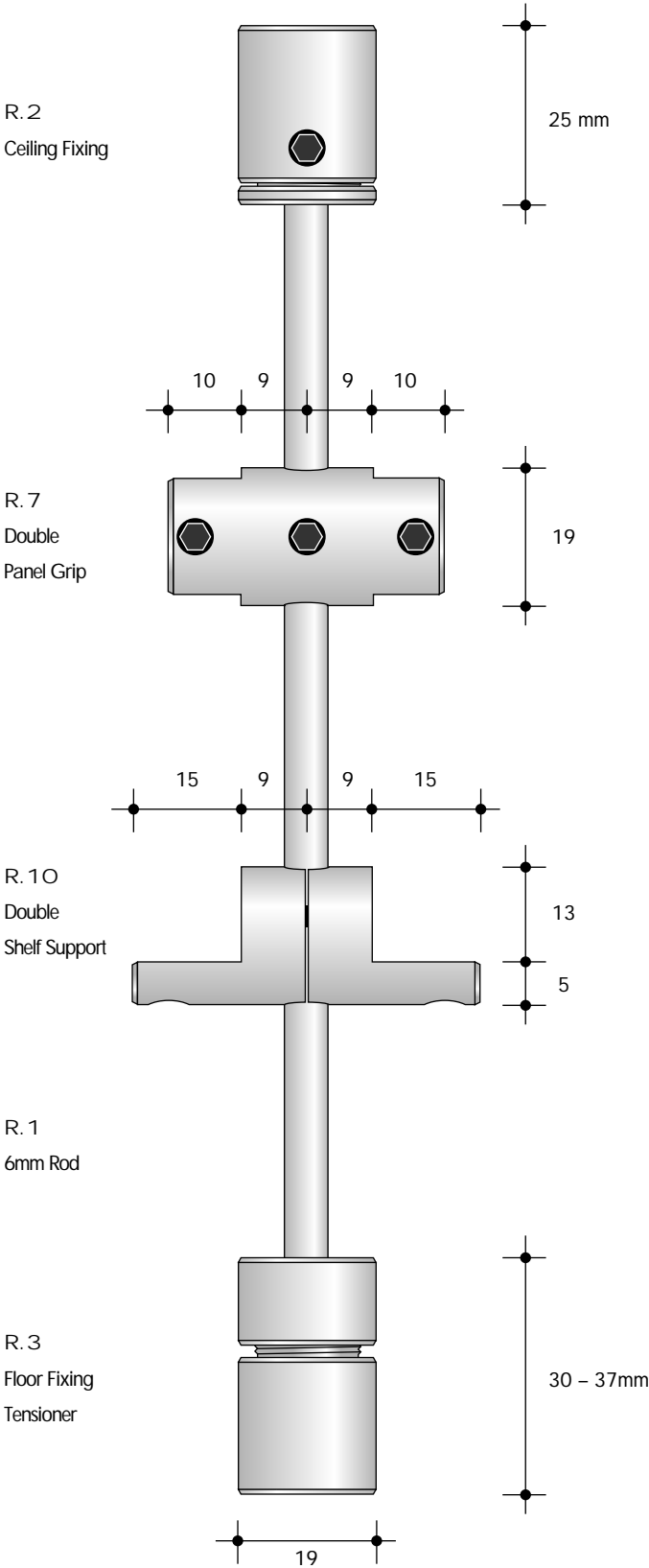
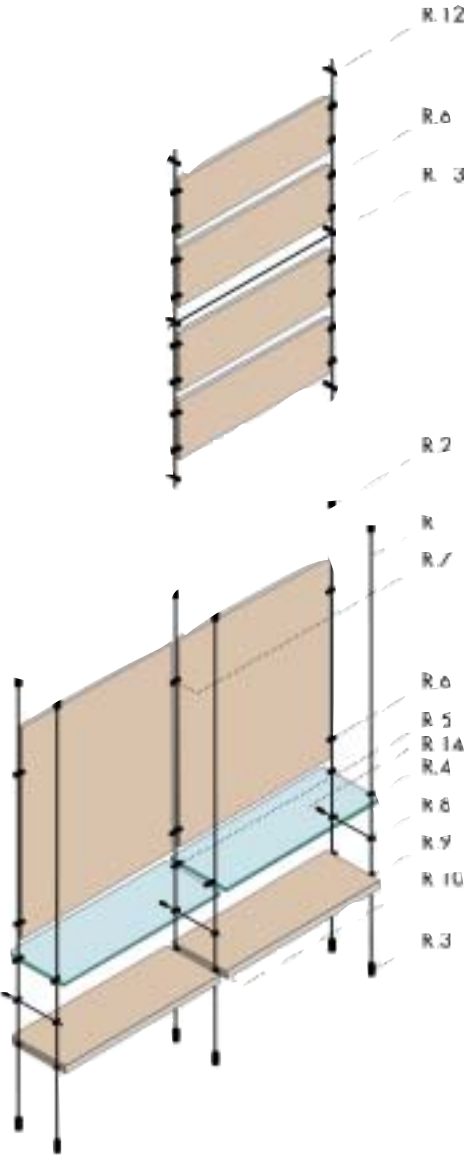
T3.2
Maxi (3mm) end stop and top fixing set to fit track T3.1.



T3.3
Maxi (3mm) tensioner and bottom fixing set to fit track T3.1.

rod

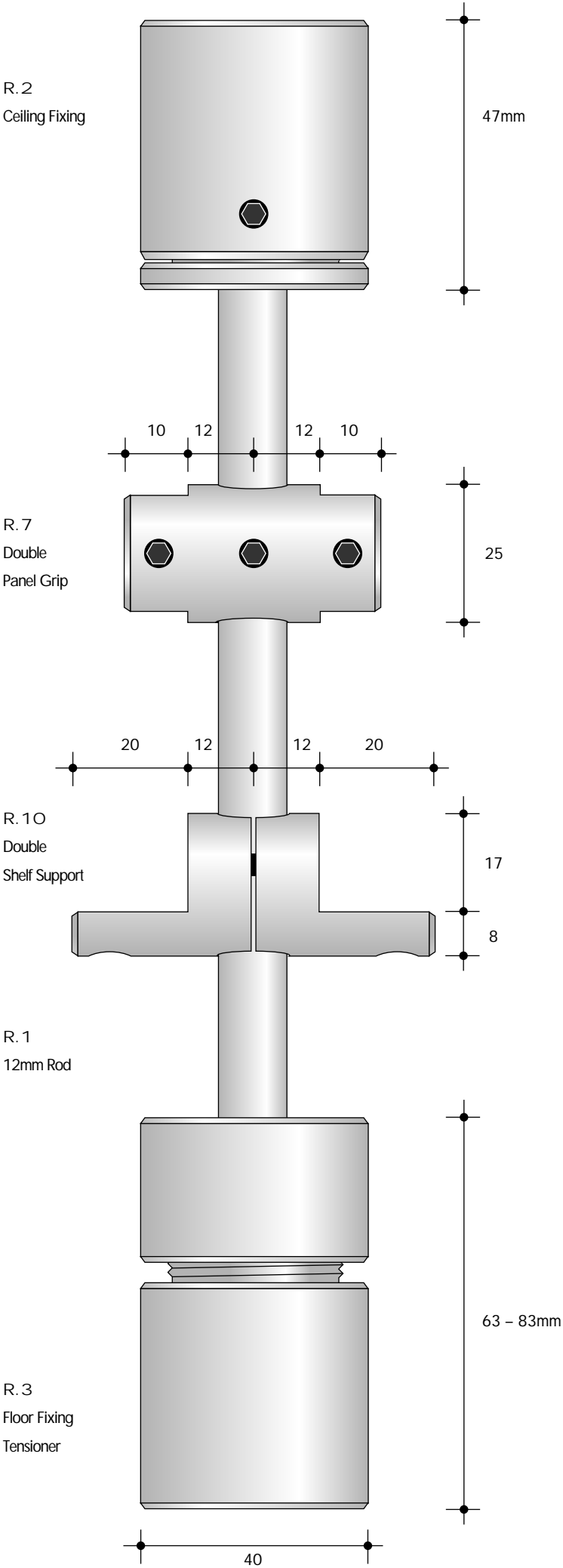
6^{mm} + 12^{mm}



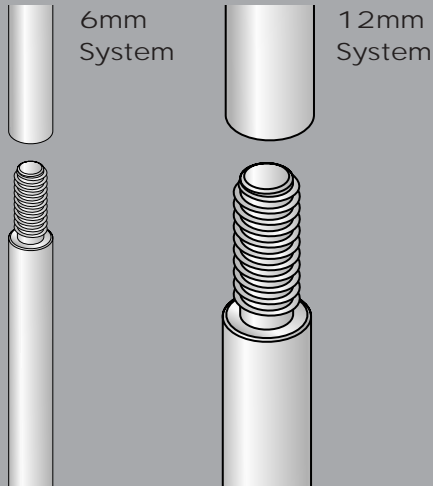
The following pages illustrate the range of clamp on components to take shelves and graphic panels etc. for use with the 6mm and 12mm Rod systems.

Rods are manufactured in 1 metre and 0.5 metre lengths and simply screw one into another, to make up required lengths, with the excess being cut off at the base. There is a range of clamp on components to take shelves and graphic panels etc. While very strong, this system, is not suited for hanging rails or front appraisal arms for clothing.

The Rod range of components is available in silver anodised aluminium as standard but is also available in black anodised aluminium, brass, stainless steel and chromed brass, with epoxy powder colours to customers' specification.

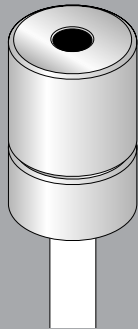


ROD 6+12mm



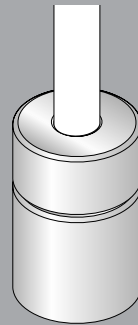
R. 1

Support rods. Available in 500mm and 1000mm lengths. The rods link by screwing together. Required lengths are achieved by trimming of any surplus from the female end.



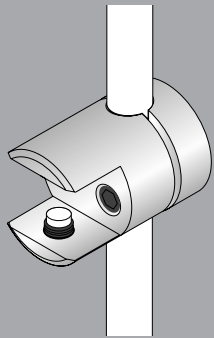
R. 2

Ceiling fixing. Screws to ceiling and receives threaded end of rod.



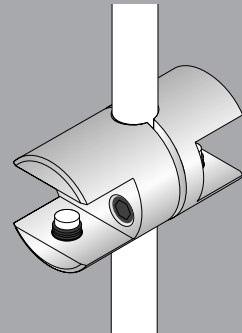
R. 3

Floor fixing tensioner. Screws to floor and receives cut end of rod.



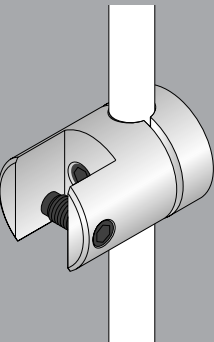
R. 4

Single shelf grip (up to 10mm). Includes nylon tipped Allen screw.



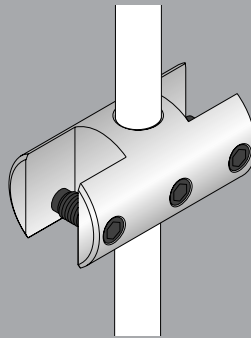
R. 5

Double shelf grip (up to 10mm). Includes nylon tipped Allen screws.



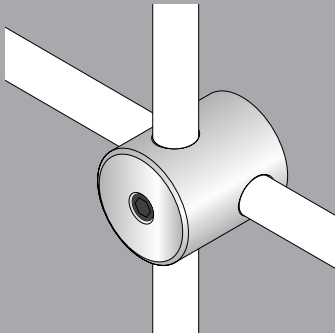
R. 6

Single panel grip (up to 10mm).



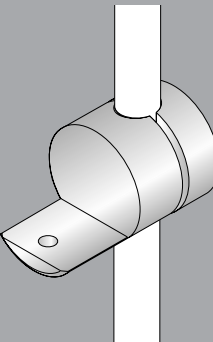
R. 7

Double panel grip (up to 10mm).



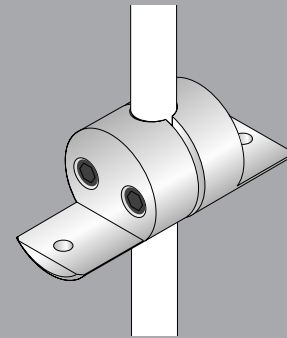
R. 8

Cross fixing. For securing two rods at right angles to each other.



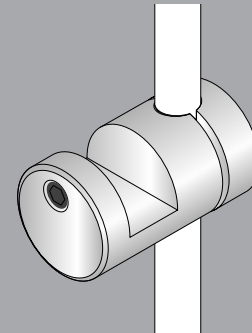
R. 9

Single shelf support. For shelving too thick for use with item R.4. This component is screw fixed to the underside of the shelf.



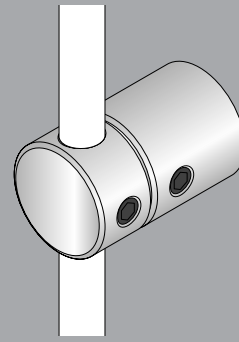
R. 10

Double shelf support. For shelving too thick for use with item R.5. This component is screw fixed to the underside of two shelves.



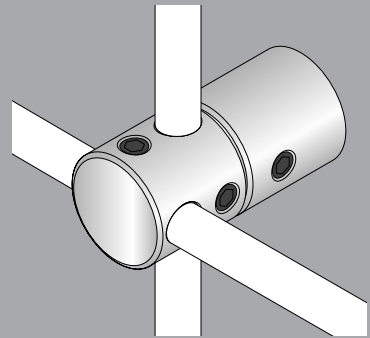
R. 11

Picture support hook.



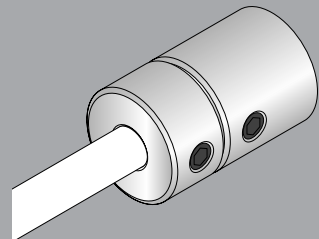
R. 12

Single rod wall mounting. For securing rod parallel to wall.



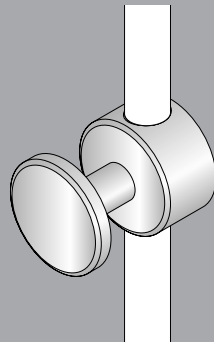
R. 13

Double rod wall mounting. For wall mounted fixing of two rods at right angles to each other.



R. 14

Single rod wall end fixing. Universal end fixing for securing rod at right angle to wall.



R. 15

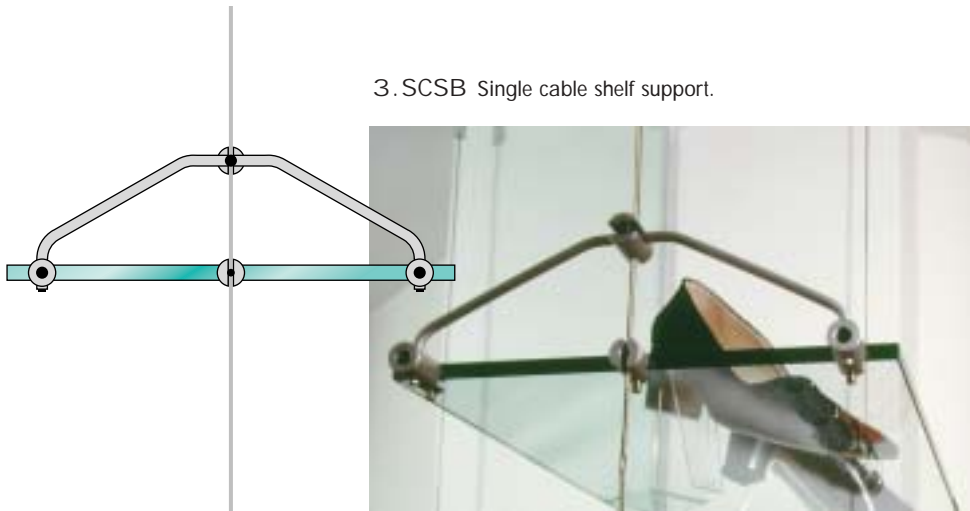
Panel support. Requires 10mm hole drilling in panel.

accessories

As illustrated, Shopkit offers a standard range of display and merchandising accessories. While all accessories can be used with the Maxi Cable system, only the timber and glass shelves and acrylics are suitable to be used with the Mini Cable, 6mm and 12mm Rod systems.

When requiring acrylic 'easy access' or brochure holders, Shopkit can supply A4, A3, A2 and A1 as standard. Special sizes and designs can also be made according to requirements.

Also shown are Shopkit's new Glass Panel Support Brackets, for 10mm glass, in polished or brushed finish stainless steel. These brackets are available in adjustable or non-adjustable form and are designed to be fixed to the floor or ceiling. It is essential that the architect/specifier ensures both floor and ceiling structures are capable of taking the fixings and load.



3. SCSB Single cable shelf support.



GPS
Glass Panel Support.



GPS/A
Adjustable Glass Panel Support.



MA. 1
Standard
Glass Shelf.



MA. 5
Angled
Wood Shelf.



MA. 3
Slatted
Wood Shelf.



MA. 4
Slatted
Aluminium Shelf.



MA. 6
Front Appraisal Rail
with two front
appraisal arms.



MA. 7
Single
Hanging Rail.



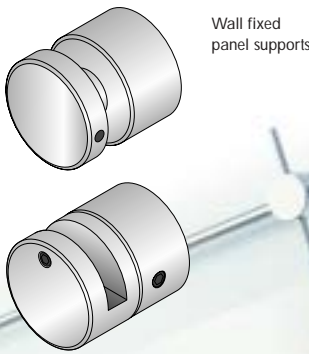
balustrades banners + signage

Connections to individually designed balustrades can be made using three standard ways as illustrated. If other connections are required Shopkit will be pleased to discuss individual solutions to ensure our product relates, in design, to particular architectural details.

It is the responsibility of the architect/specifier to ensure building regulations are met and complied with.

Shopkit's unique and highly successful display banner system, using stainless steel components, can be manufactured in an infinite range of sizes, proportions and combinations.

Before installation the architect/specifier must ensure the fabric of the building is suitable. If in doubt, a structural engineer should be consulted.



Rod slat signage system

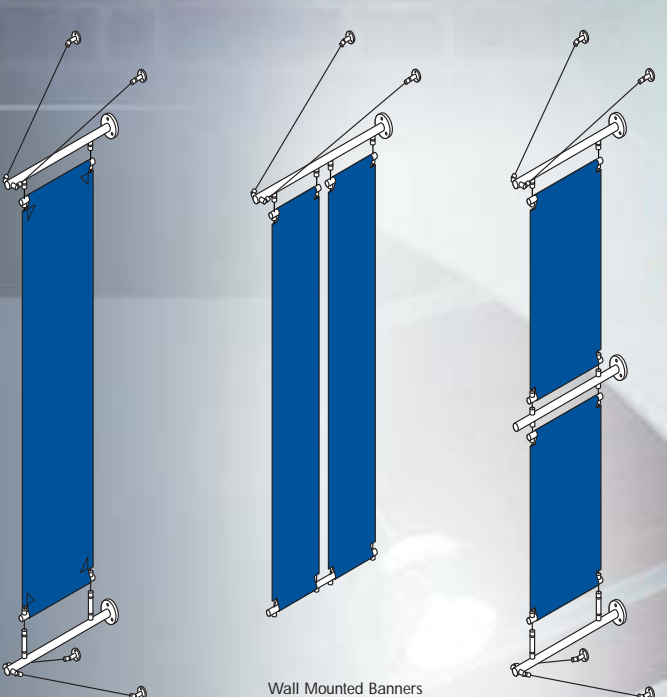
Tensioned Structures



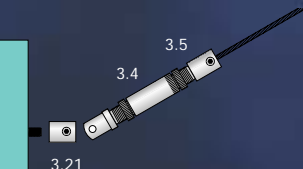
Wall Fixed Banners



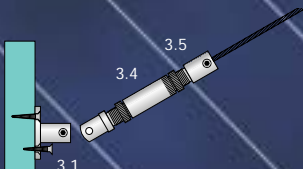
Free standing banner unit



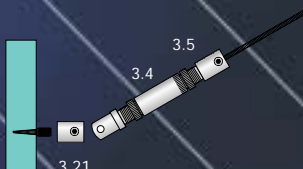
Wall Mounted Banners



Threaded stud welded to metal post to accept ferrule.



Fixing plate mounted to wood post to accept tensioner.



Threaded stud screw mounted to wood post to accept ferrule.

fabrication & manufacturing



Metalwork structure with banners and lighting



Counters



Point of purchase



Exhibition stands



Signage with integral lighting



Counter and internal screen



Literature display



Literature stand



Manufacturing and distribution facility

Stainless and mild steel custom made metalwork structures

Shopkit will design and manufacture the following to client's specifications: specialised tensioned support structures with integral low voltage cable and rod suspended lighting systems, signage systems, tensioned banners and canopies.

Bespoke cabinets and counters, display shelving, exhibition stands, internal screens, point of purchase and literature displays are just some of the other systems designed and manufactured by Shopkit Designs Ltd.

All components are produced in mild or stainless steel at Shopkit's own manufacturing plant in the UK.

SHELVING

INTERNAL SCREENS

EXHIBITION STANDS

LITERATURE DISPLAYS

POINT OF PURCHASE

COUNTERS & CABINETS

SUSPENDED LIGHTING SYSTEMS

TENSIONED BANNERS & CANOPIES

lighting



L1.200

3mm interwoven tinned copper + stainless steel cable, clear PVC coated. Used when combining suspended shelving and integral lighting. This cable can carry up to 200VA.



L13

Secondary power feed cable. Supplies the 12v current from the transformer to the lighting cables, power track and rod.



L3

Isolated tensioner. Used to tension the cable, with the nylon centre barrel isolating the power from the base fixing plate. The cable is pushed into one end of this component and secured by tightening two grub screws, the other end can then be secured to L2. Available in black or white.



L4

Nylon end stop, isolates the power from the fixing plate secured to the cable by the same method as item L3. This nylon end stop may be secured to item L2. Available in black or white.



L14

End connectors for power cable. Secures low voltage power cables to integrated shelving and lighting cable drops.



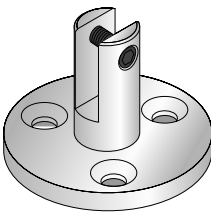
L7

Inline tensioner. Accepts cable from both ends and the central nylon barrel is used to isolate long cable runs, allowing a transformer to be used at each end of the cable run. Available in black or white.



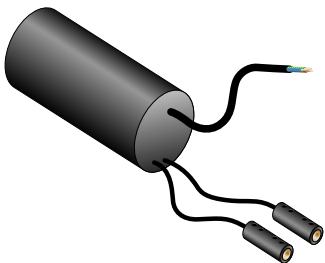
L18

A range of dichroic and halogen lamps ranging from 12° narrow spot to 60° superflood, 20-50 watt and available in gold, silver, black and chrome finishes to match lamp fitting finish. Tinted lenses are available in red, blue, green and amber.



L2

Fixing plate (45mm diameter). For fixing to floor, ceiling, or wall and accepts L3 and L4.



L12.60-105

Small cylindrical transformer. Requires a pair of L13 & L14 for final connection to cable setup.



Transformers + Lamp Options

L12.60-105	5 x 20w	2 x 50w
L12.200	10 x 20w	4 x 50w
L12.300	15 x 20w	6 x 50w

Optimum lighting of product or graphic panels can be achieved using either S4 Vertical Telescopic Lamp Holders or S5 Lamp Holders. The S4 Vertical allows for different width cables up to 900mm and the S5 fitting can be made for cables with centres of 150mm up to 600mm. Both light fittings swivel and can be moved up and down the cables as required.



S4 Vertical



S5



TZ6 Offset

Refer to the **TZ** brochure for a full range of low-voltage lamp fittings.



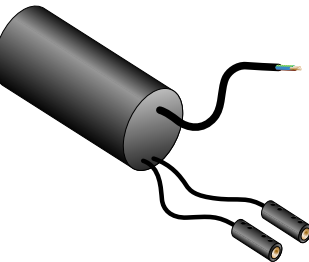
Safety Transformers

Shopkit Design's low voltage lighting system is designed for 33 amp 300 watt maximum per circuit. The only recommended transformers are those manufactured to IEC 598 (EN 60598) and EN 60742 standards. We also advise the use of a security device on all low voltage systems, please ask for details.



Transformers + Lamp Options

L12.60-105	5 x 20w	2 x 50w	Small cylindrical transformer.
L12.200	10 x 20w	4 x 50w	Requires a pair of L13 & L14 for final connection to cable setup.
L12.300	15 x 20w	6 x 50w	



L12.60-105

Important-
Never exceed the maximum wattage of the transformer.

The transformer can be positioned in any convenient location up to 1500mm from the cables to which the power is being fed, via a pair of power feeds (item L.13) with appropriate end connectors.

Power Feeds

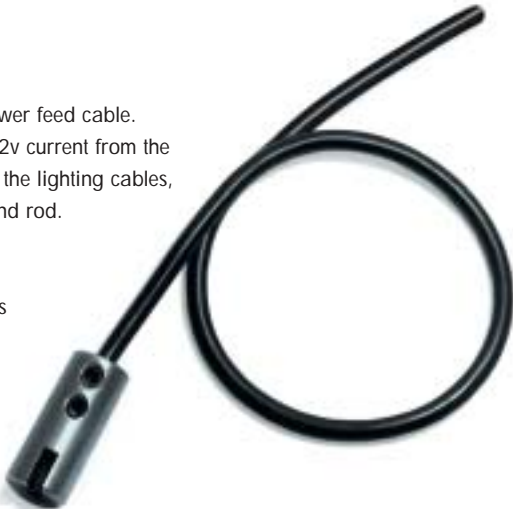
L13

Secondary power feed cable.
Supplies the 12v current from the transformer to the lighting cables, power track and rod.

L14

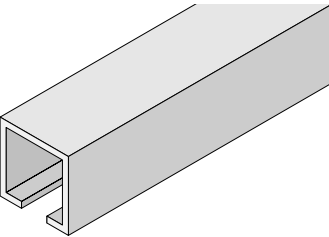
End connectors for cable.

L13 power feed cable with L14 end connector.



Track Set-up Components

Shopkit Design's low voltage lighting can also be incorporated into the track suspension system, which enables complete freedom to position and reposition display with integral lighting.



T3.1.L

Wall, ceiling or floor fixed track into which maxi 3mm assemblies can be fixed. Price per 1000mm modules.



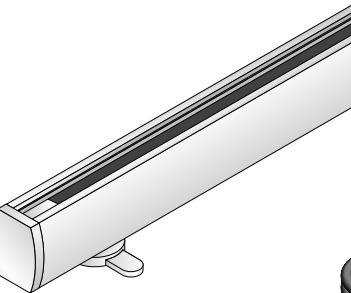
T3.2.L

Nylon end stop, isolates the power from the top track. Available in black or white.



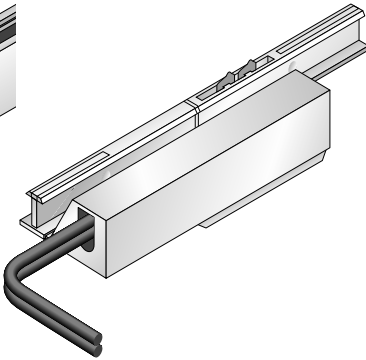
T3.3.L

Isolated tensioner. Tensions cable and isolate power from the base track. Available in black or white.



T3.4.L

Low voltage power track. Installed inline with item T3.1.L and connects to the secondary output side of the transformer using L.13. Use item T3.5.L with end connectors item L.14, to connect to cables.



T3.5.L

Low voltage power track cable feed. This clips into item T3.4.L and carries the power to the cables. The item T3.5.L slides along the track T3.4.L to any desired position.

Variable Size Graphic Display and Lighting using Track to Track

Transformer can be installed in any position along track using adjustable connector T3.5.L.

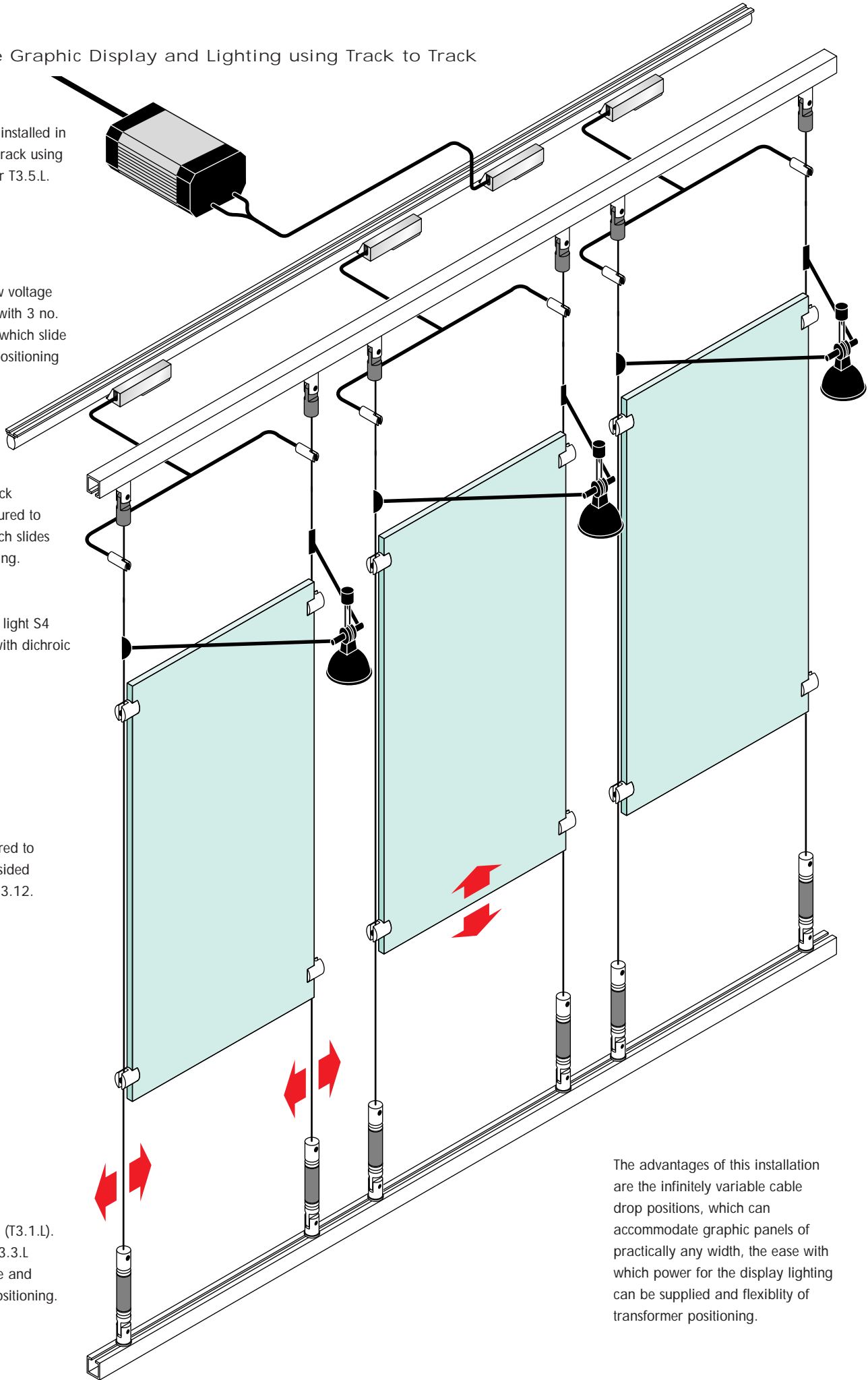
Ceiling mounted low voltage power track T3.4.L with 3 no. T3.5.L powerfeeds, which slide in power track for positioning and connection to cable drops.

Ceiling mounted track (T3.1.L). Cables secured to end stop T3.2.L which slides in track for positioning.

Low voltage display light S4 Vertical, available with dichroic or halogen bulbs.

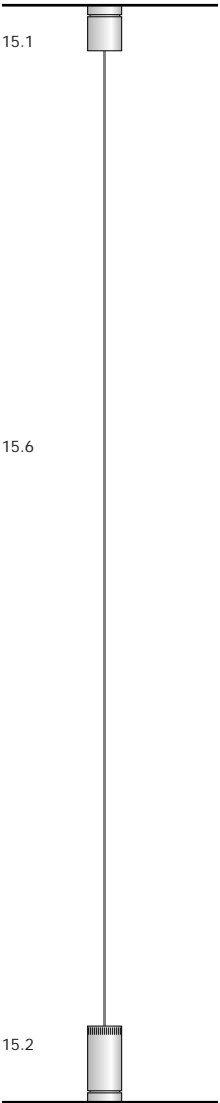
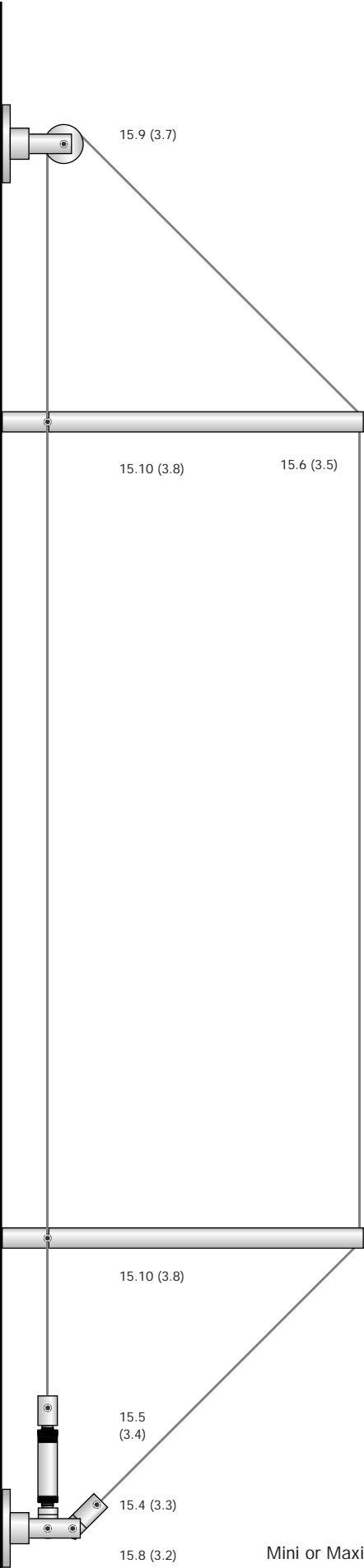
Display panels secured to cables using single sided picture/panel grips 3.12.

Floor mounted track (T3.1.L). Cables secured to T3.3.L which tensions cable and slides in track for positioning.

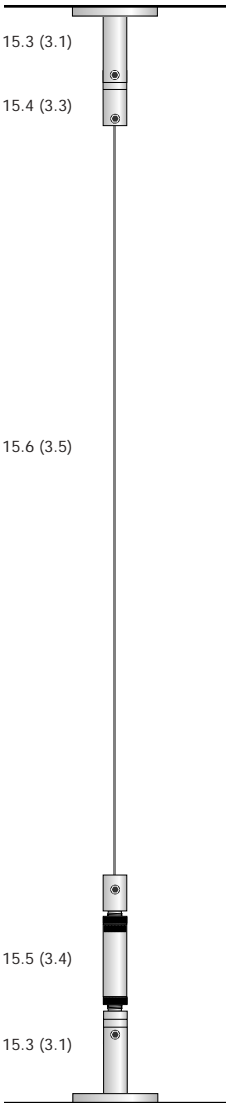


The advantages of this installation are the infinitely variable cable drop positions, which can accommodate graphic panels of practically any width, the ease with which power for the display lighting can be supplied and flexibility of transformer positioning.

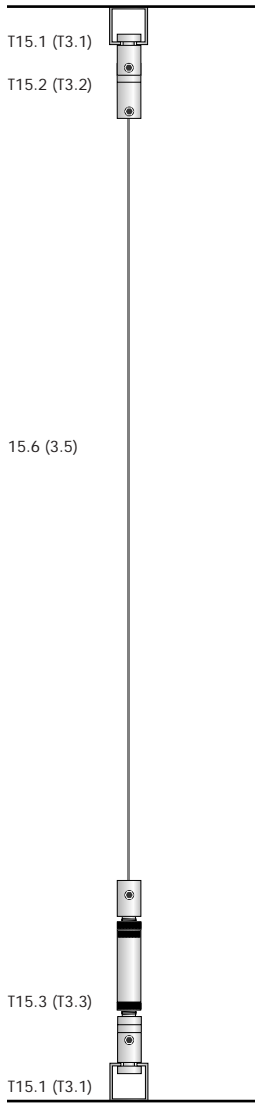
setups



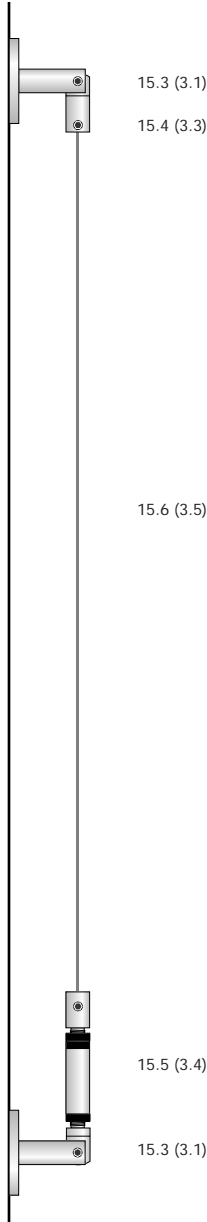
Economini – ceiling to floor.



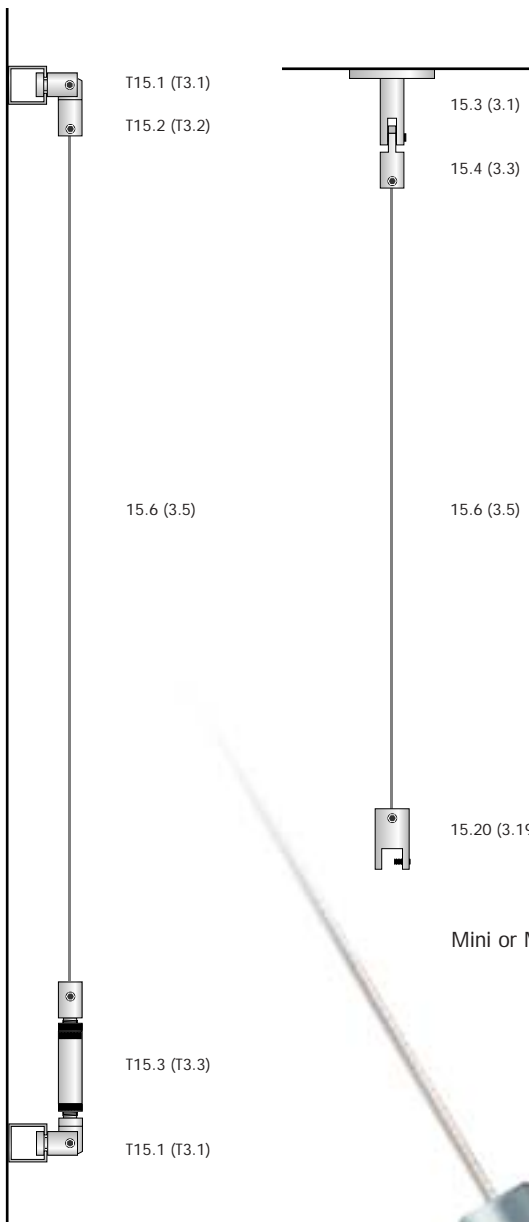
Mini or Maxi – ceiling to floor.



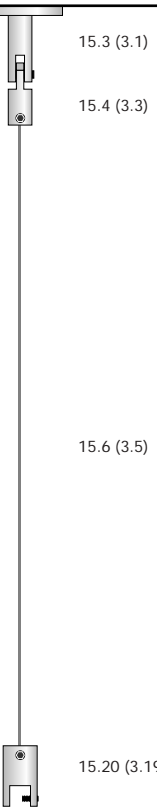
Mini or Maxi Track – ceiling to floor.



Mini or Maxi – wall to wall.



Mini or Maxi Track – wall to wall.



Mini or Maxi – suspended.

