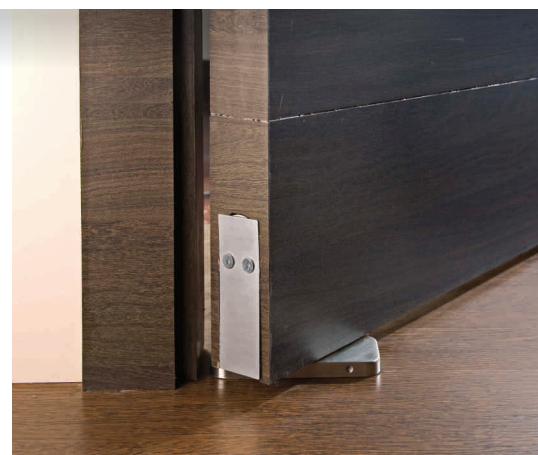
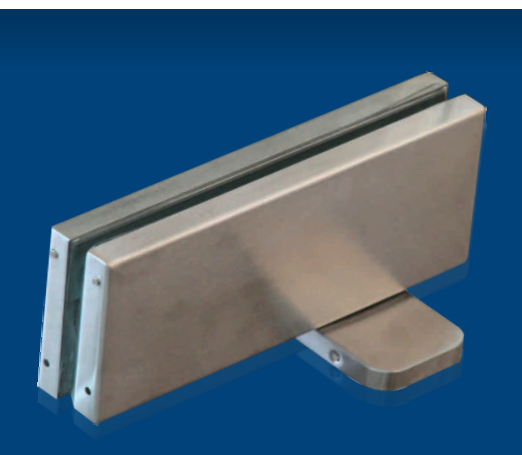


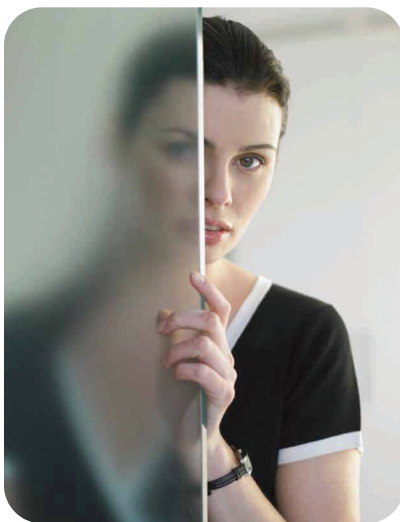


CONCEALED FLOOR SPRING for Glass & Wooden Doors



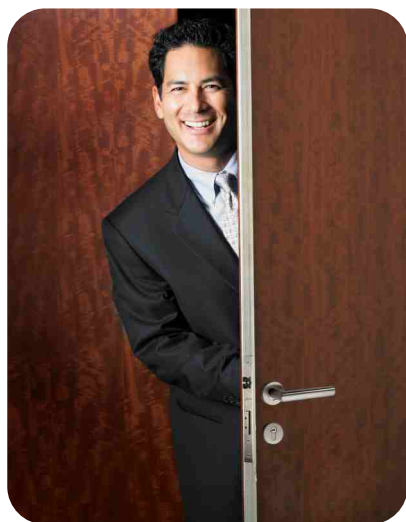
“ INNOVATION for total vision™

Ozone is a leading and established brand offering high quality Architectural Hardware and Safety Solutions worldwide. Ozone has achieved many accolades to its credit by serving countless prestigious projects world over with its innovative, technologically advanced and quality products. Operating on a world wide platform with prestigious business associates, we offer superior product solutions which meet global standards and best practices. Ozone offers complete Architectural Hardware Solutions through more than 3000 products, and a capacity to innovate new products for its customers.



Door control devices have been the back bone of Ozone and its customers. These devices have been functioning efficiently for over a decade with minimal failures & high performance.

The manufacturing process employs high-precision CNC computer-controlled robotics, combined with automation and technical know-how under a strict quality check system. These products conform to International Standards of fire and safety and also meet ISO 9001 & British BSI standards for its quality management systems.



Concealed floor spring is Ozone's latest and most innovative offering till date. After a successful launch of Ozone Plus for Glass doors. This revolutionary fitting is a Bottom Floor Hinge which can be incorporated inside the door frame on the bottom and has an in-built hydraulic system. Therefore the fitting does not require any floor spring to move the door and omits the requirement of a preset (cut required for mounting a floor spring) on the floor. This makes the door installation very easy and also makes possible a clean seamless floor and door way.

Ozone is now launching an innovative Concealed Floor Spring for Wooden doors and new models for Bigger & Heavier Glass doors.

Ozone Plus is compliant as per **EN 1154** European Standards and is tested for long life and remarkable performance.



CONCEALED FLOOR SPRING FOR WOODEN DOORS

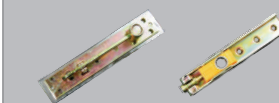
OCFH-W-100

Product Specification

- Suitable door weight: Max 100kg.
- Suitable door width: 750~1000mm
- Suitable door thickness: >40mm
- Angle of opening: 150°
- Quick and easy installation
- Compliant as per **EN1154** European Standards
- Hold open 90° (Non Hold Open also available)
- Bottom plate is of SS 304 grade, SSS & PSS finish



Standard packing consists of top pivot set



DATA AND FEATURES

		Item No.
Max. door width	1000mm	OCFH-W-100
Max. door weight	100 kg.	
Suitable door thickness (mm)		≥ 40
Body dimensions(mm)	Length	181
	Width	56
	Thick	32
Angle of opening		150°
Closing speed adjustable		✓
Braking speed adjustable		✓
Hold open at 90°		✓
Non-handed		✓

✓ = yes

x = no

○ = option



CONCEALED FLOOR SPRING FOR GLASS DOORS

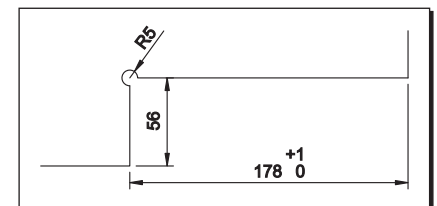
OCFH-100

Product Specification

- Suitable door weight: Max 100kg.
- Suitable door width: 750~1000mm
- Suitable door thickness: 8~13mm
- Ambient temperature: 20°C~+50°C
- Quick and easy installation
- Compliant as per **EN1154** European Standards
- Hold open 90° (Non Hold Open also available)
- Finish: SSS/PSS
- No need to have the pre-set on the floor
- Easy installation with base seat adjustable
±3mm backward and forward
±3mm left and right and 4° alignment adjustment



Glass Cutout



CONCEALED FLOOR SPRING FOR GLASS DOORS

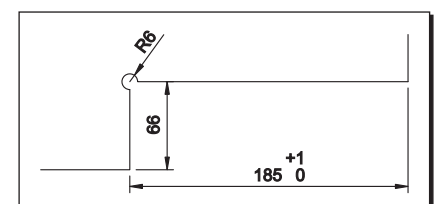
OCFH-105

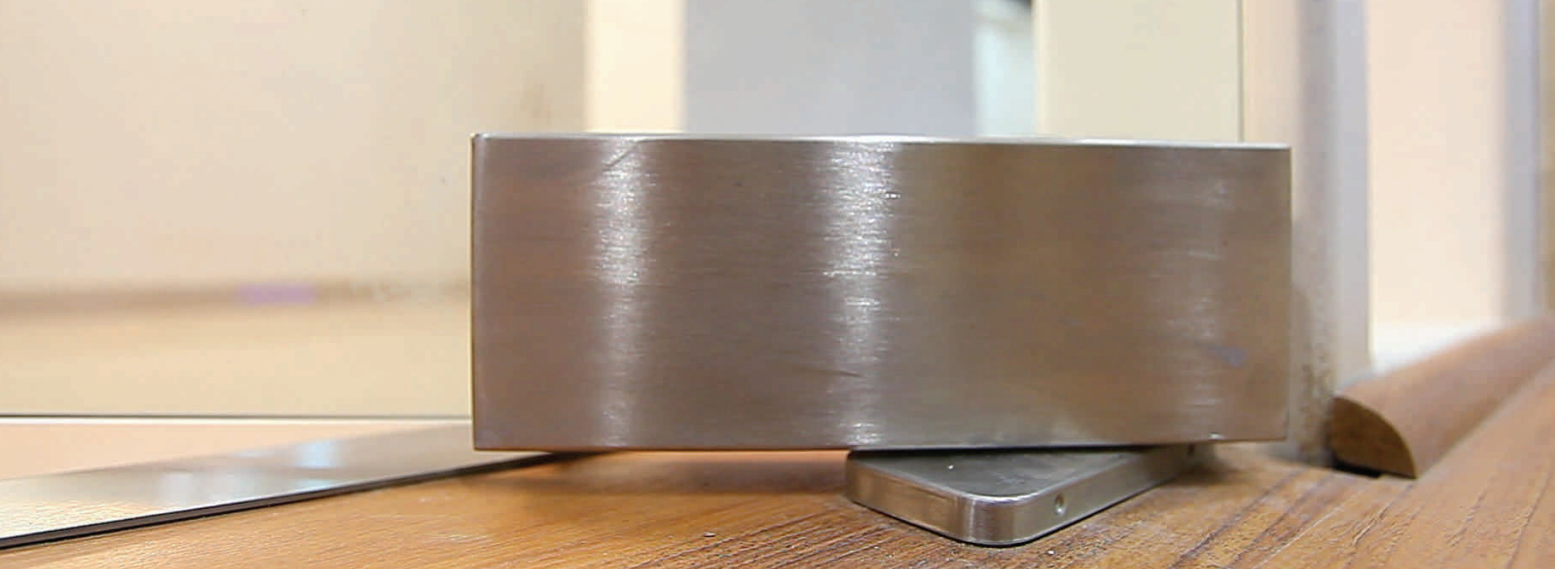
Product Specification

- Suitable door weight: Max 100kg.
- Suitable door width: 750~1250mm
- Suitable door thickness: 10~15mm
- Ambient temperature: 20°C~+50°C
- Quick and easy installation
- Compliant as per **EN1154** European Standards
- Hold open 90° (Non Hold Open also available)
- Finish: SSS/PSS



Glass Cutout





POWER ADJUSTABLE CONCEALED FLOOR SPRING FOR GLASS DOORS

OCFH-135

Product Specification

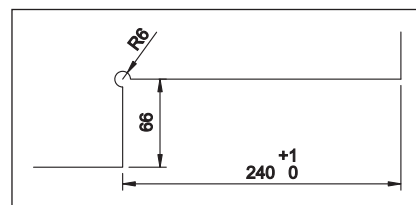
- Suitable door weight: Max 100kg.
- Suitable door width: 750~1250mm
- Suitable door thickness: 8~15mm
- Ambient temperature: 20°C~+50°C
- Quick and easy installation
- Compliant as per **EN1154** European Standards
- Hold open 90° (Non Hold Open also available)
- Finish: SSS/PSS



HEAVY
duty model



Glass Cutout

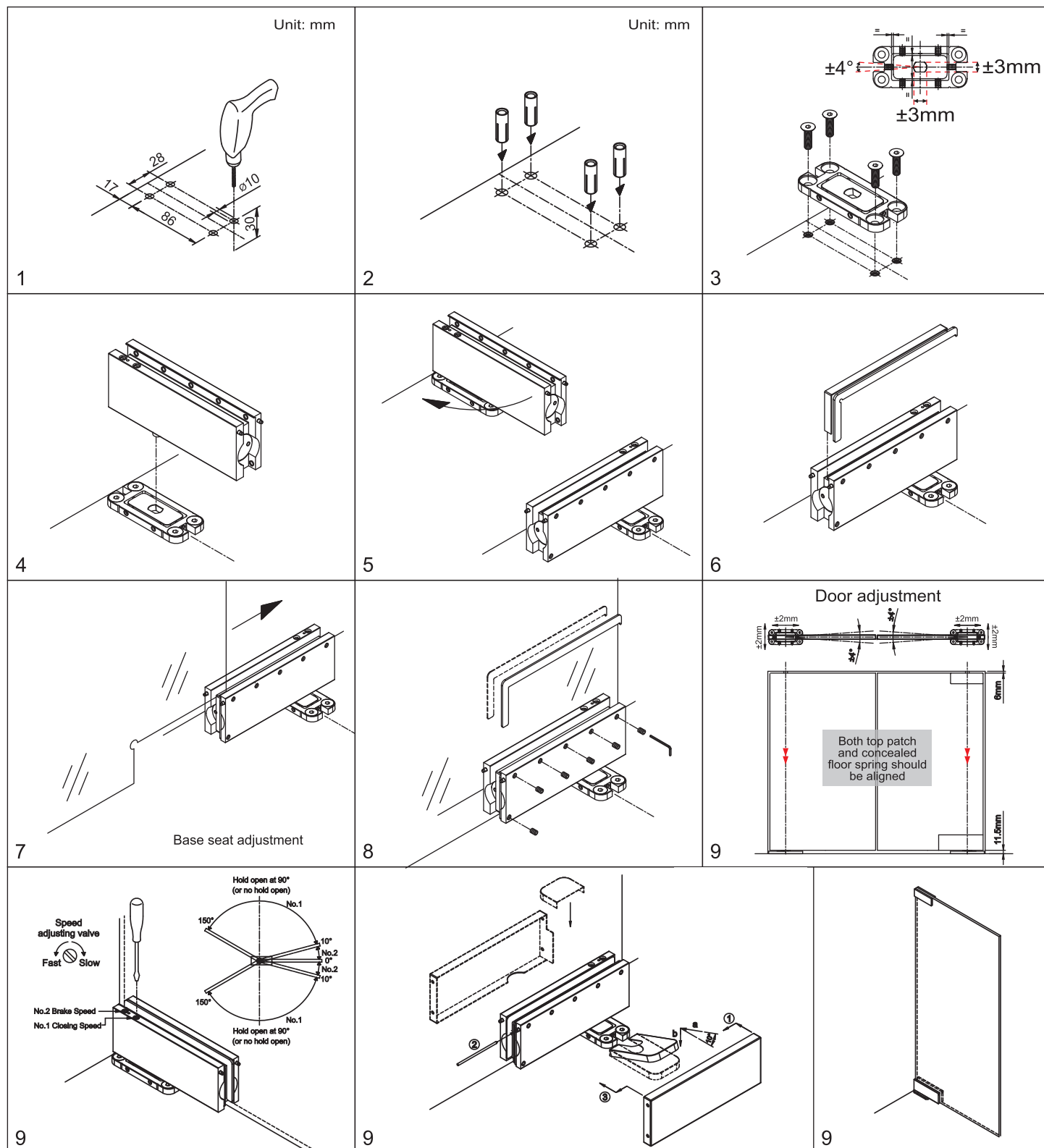


DATA AND FEATURES

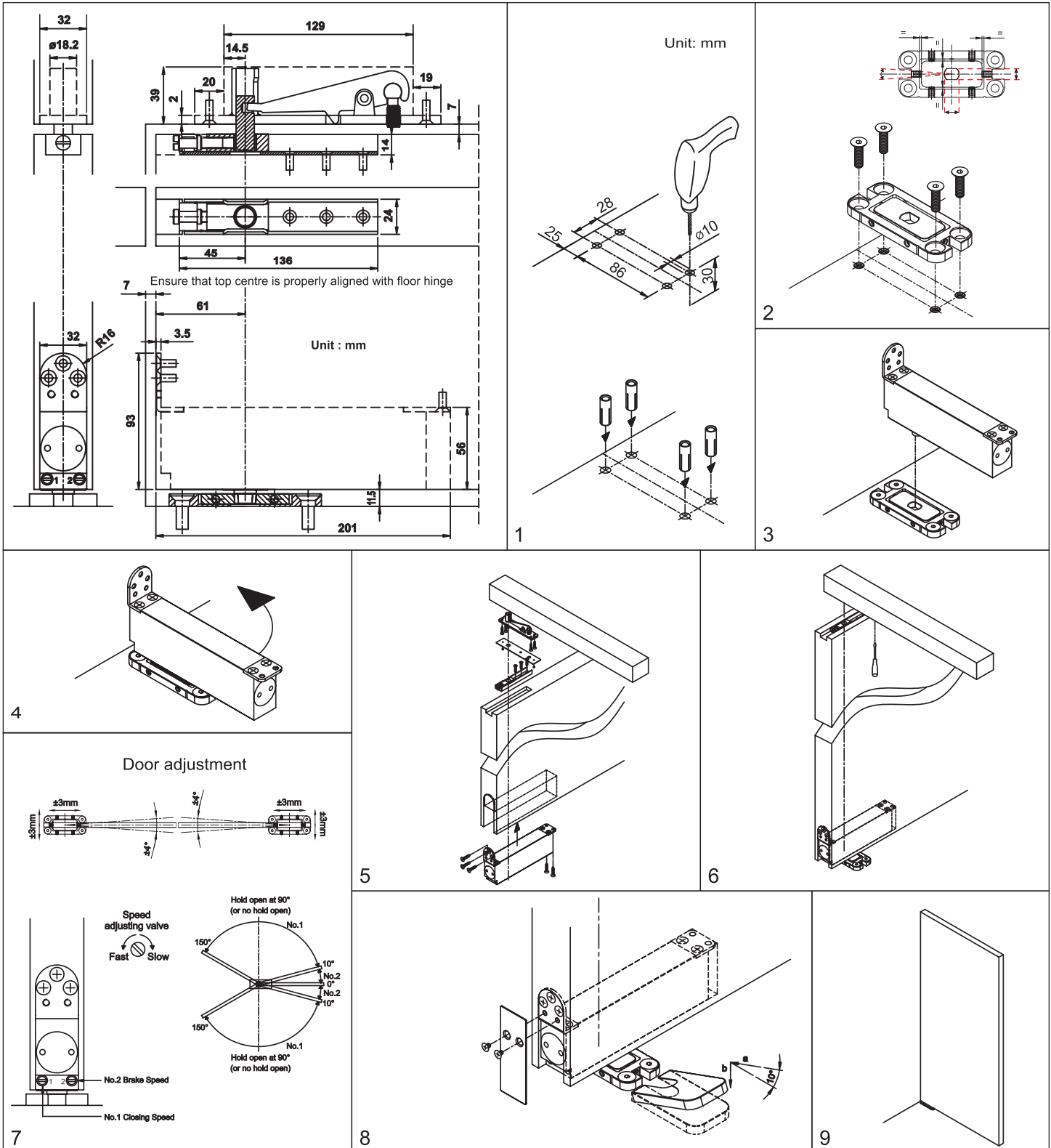
Item No.		OCFH-100	OCFH-105	OCFH-135
Max. door width		750~1000mm	1250mm	1250mm
Max. door weight		≤ 100kg	≤ 100kg	≤ 100kg
Body dimensions (mm)	Length	186	192	210.5
	Width	68	77	77.5
	Thick	36	42	42
Angle of opening		150°	150°	150°
Closing speed adjustable		✓	✓	✓
Braking speed adjustable		✓	✓	✓
Non Handed		✓	✓	✓
Power adjustable				✓

✓ =yes

x=no



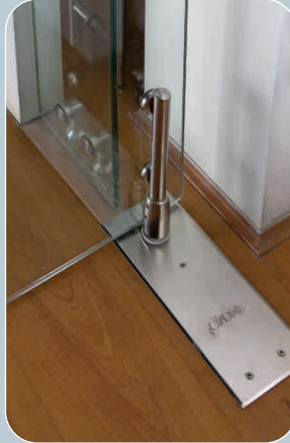
Installation manual for Wooden Doors



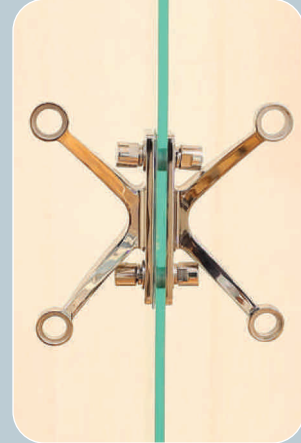
SHOWER
ROOMS



DOOR CONTROL
DEVICES



SPIDER
FACADES



GLASS SLIDING
SYSTEM

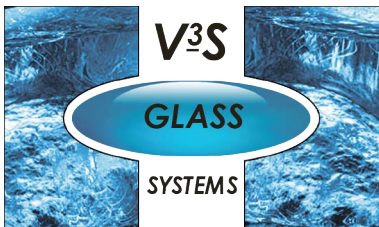


RAILING
SYSTEM



ELECTRONIC
SAFES

For more details



www.v3s-glass-systems.be